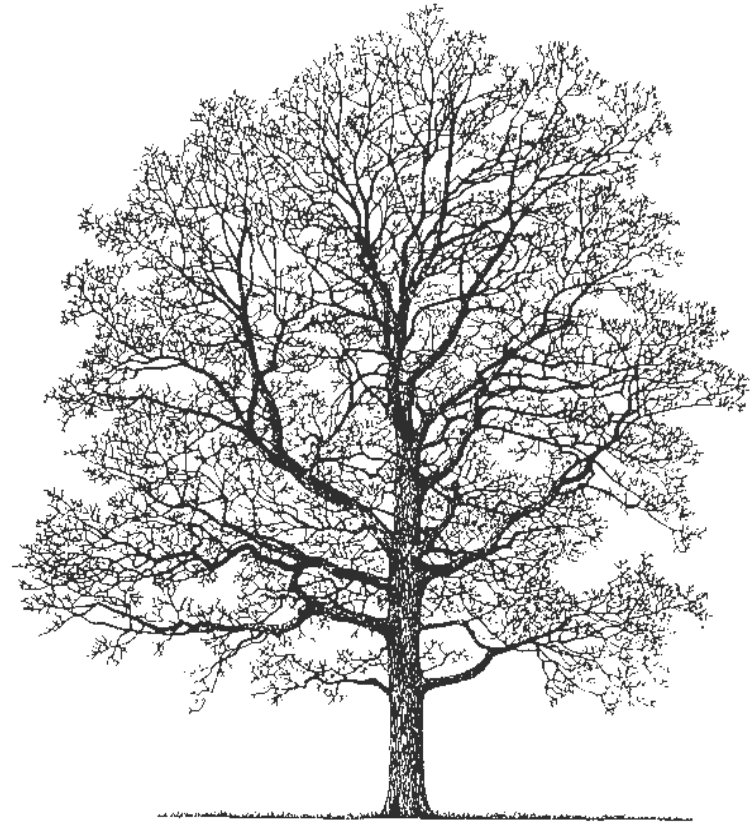
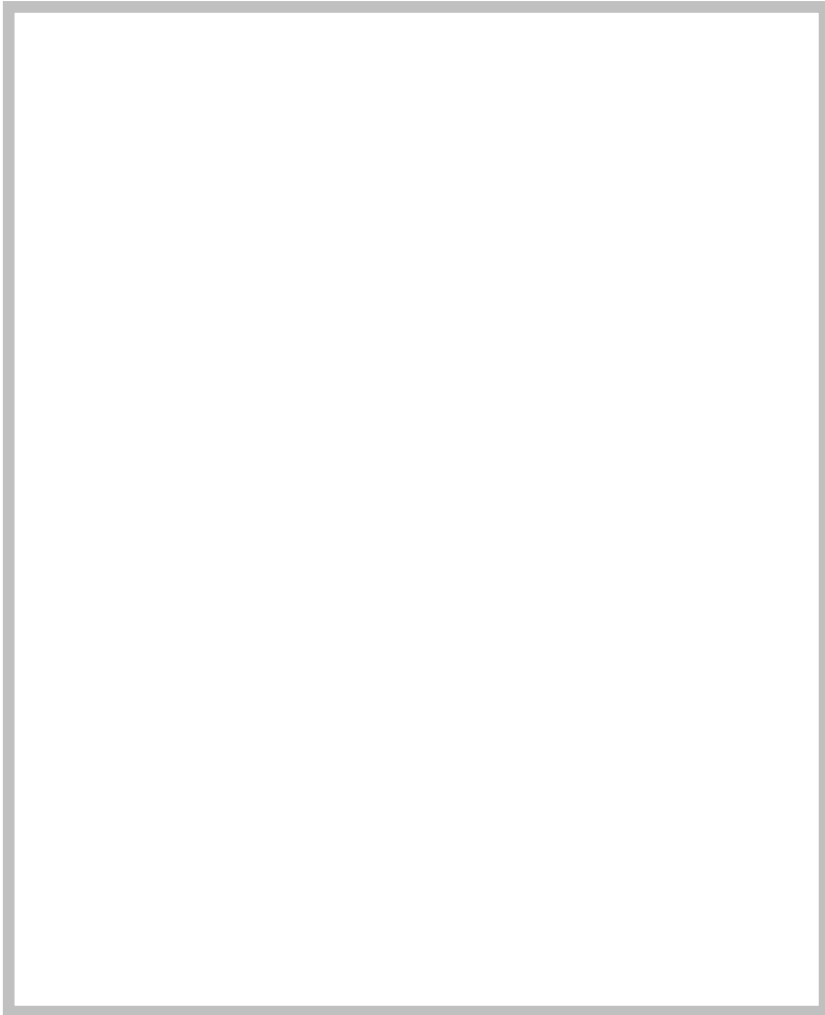


I love going outside!  
Do you know what I like best?  
Here is a picture -  
See if you can guess!



Tree and Forest Neighbor

---

Date: \_\_\_\_\_ Time: \_\_\_\_\_

## Weather Study

**Spring Summer Autumn Winter**

Describe the Weather:

Temperature	
Wind Speed and Direction	
Clear or what kind of clouds	
Rain, snow or other moisture	
Time of Sunrise	
Time of Sunset	

How does the weather feel to you?

Circle the words and write your own.

Dusty

**Muddy**

Boiling

**Freezing**

Chilly

Awful

Crusty

Dewy

Dry

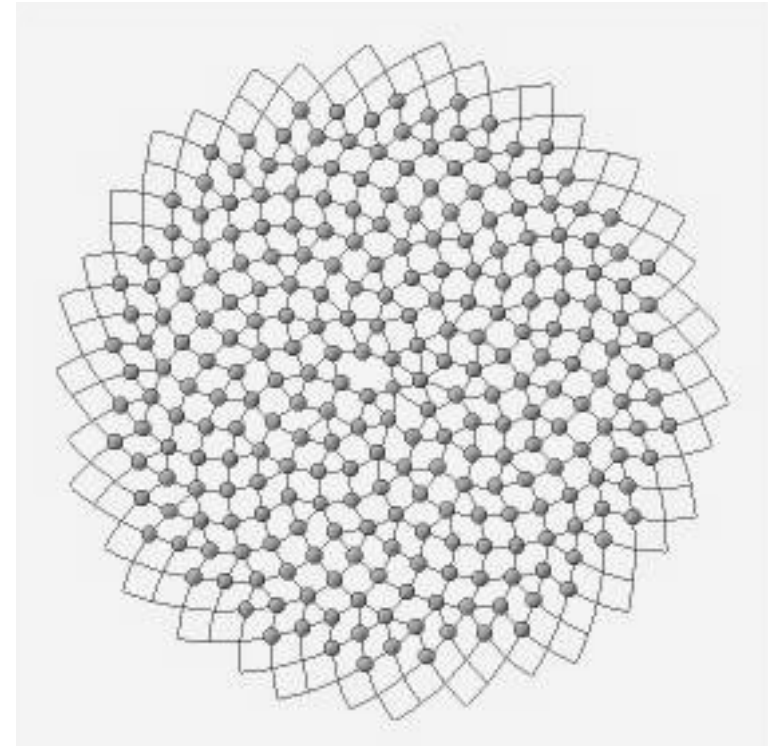
**Frosty**

Nice

*Hot*

**Pleasant**

This is your book to keep. Use it to take notes, draw or write anything you find or see while you are outside.



This booklet was provided by:

The Brenton Arboretum

25141 260<sup>th</sup> St

Dallas Center, IA 50063

515-992-4211



### Bird Behavior Bingo

Make an X on the picture when you see birds showing these behaviors.

Can you find three in a row?

### Watch the trees to find wind speed

Miles per Hour	Description	Watch the Trees
4 - 7	light breeze	leaves rustle
8 - 12	gentle breeze	leaves and twigs on trees move
13 - 18	moderate breeze	small tree branches move
19 - 24	fresh breeze	small trees move
25 - 31	strong breeze	large branches move
32 - 38	near gale	trunks move
39 - 46	gale	twigs break off from trees
47 - 54	strong gale	branches break off from trees



## Bird Banter

Try to copy the bird songs that you hear.  
Sometimes birds will return the call or  
will fly closer to you.

**Blue Jays** - "Jay, Jay, Jay"

**Crows** - "Caw. Caw. Caw"

**Barred Owls** - "Who cooks for you?"

**Bob White or Quail** - "Bob, Bob, White?"

**Rufus sided Tohee** - "Drink your Tea"

**Chick a Dee** - "Chick a Dee, Dee, Dee"

**Robin** - "Cheer-up, cheerily, cheer-up  
cheerily"

**Sphishing** - "SP-sh-sh-psh-sh-sh-sh"

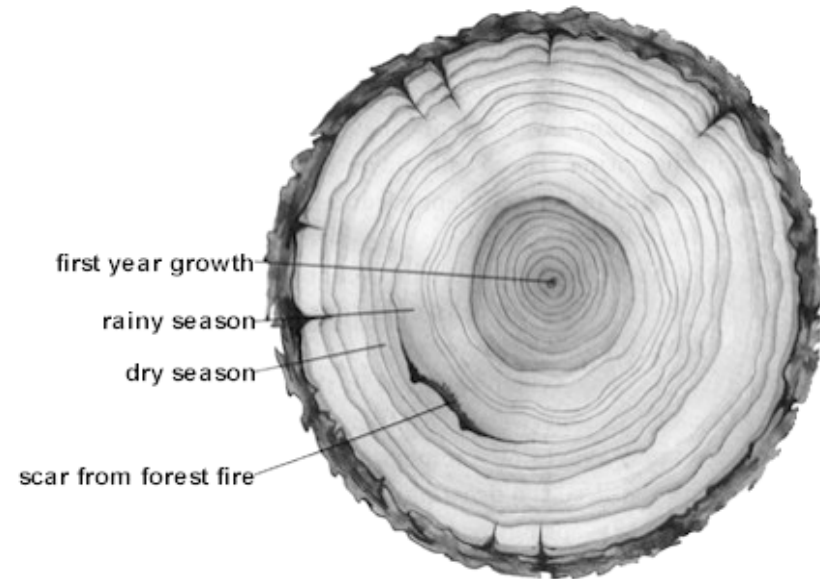
Repeated sphishing calls can bring curious  
birds close to the caller.

---

## Bird Call Hide and Seek

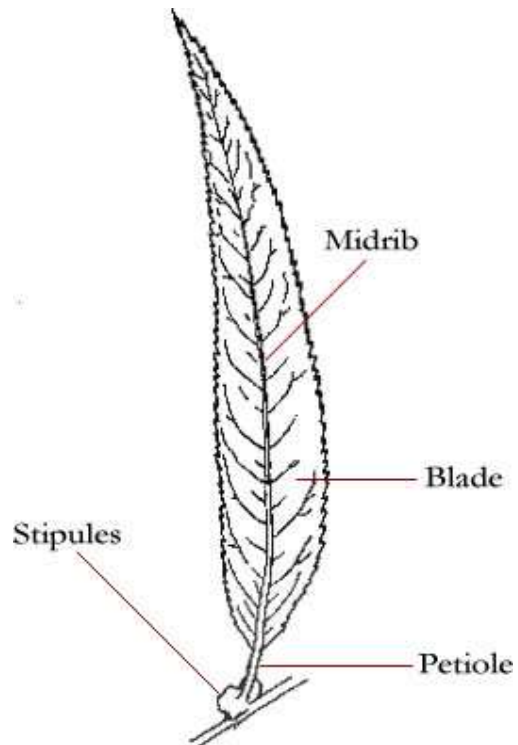
Choose one person to be the "bird," everyone  
else is a birdwatcher. The birdwatchers cover  
their eyes and count to 10. The "bird" hides and  
makes a birdcall. Birds always move around -  
calling and hiding - so be quick! Try to reach  
the nest before the birdwatchers catch you!

Every year a tree adds another new ring.  
Count the rings and find out how old a tree is.



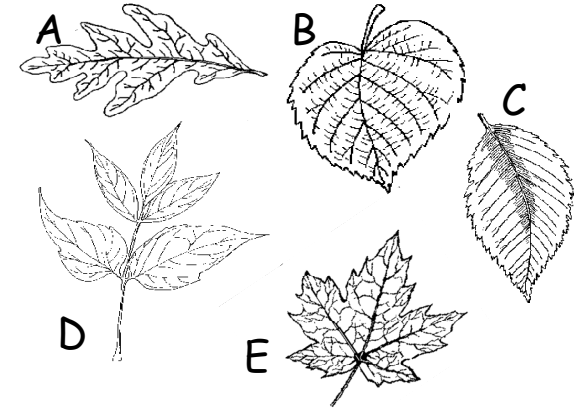
Can you find the ring that is the same year as your  
birthday?

Write a story about the life of this tree the year you were born.



Amaze your friends with your tree knowledge:  
 A leaf does not have a stem – it is a petiole!

### Play the leaf game!



\_\_\_ White Oak: Rounded fingers with smooth edges

\_\_\_ Linden or Basswood: Heart-shaped leaves with a toothed edge

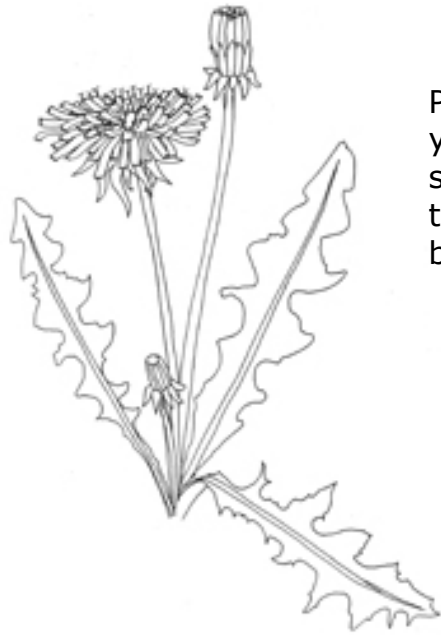
\_\_\_ Elm: A simple leaf, with a saw-blade edge

\_\_\_ Box Elder: Five leaflets form this single leaf

\_\_\_ Maple: Three great points make this leaf look like a crown

Write the letter that matches the description.

Are these trees in your yard or neighborhood?  
 Go for a walk and find out!



Put this flower under your friends chin. If you see a yellow reflection that means they like butter.

If you can blow ALL of the seeds off in 1 breath – your wish will come true.



This flower's name is:

---

**Clue:**

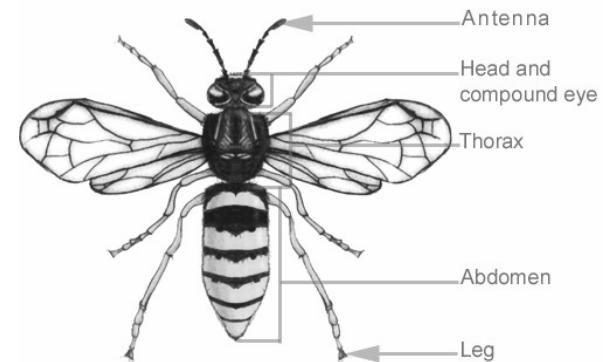
*If a lion had teeth this yellow,  
he wouldn't be very dandy!*

## Go on an Insect Safari!

1. Use the insect boxes in your backpack
2. Look for bugs
3. Carefully put the bugs in your box, and use the magnifying lid to look closely
4. Write down what you know about your bug

### Go on another safari!

Grass Safari   Tree Safari   Wetland Safari



Remember an insect has:

6 legs - Antenna - Head - 3 Body Parts  
Maybe wings, maybe no wings

# Fruits

Make a list of fruits that grow on trees.

---



---



---



---



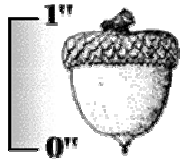
---



---

Is an Acorn a Fruit?

---





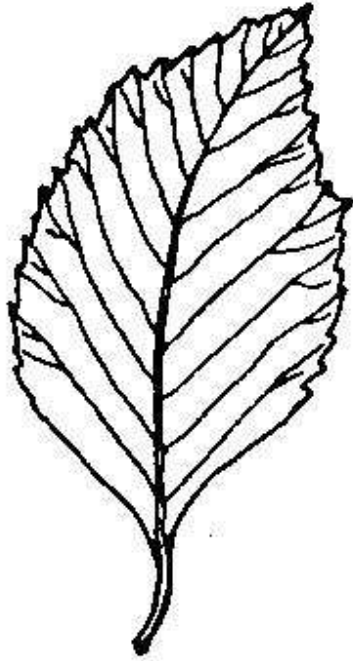
(When a plant grows a special package with a seed inside, the package is considered a fruit)

# Insects

G D I D B D T E I G C O C O O N Y W  
 C F P E V R V T A Y B Q I B C T X F  
 O Z F I R E F L Y N R L N H M K B E  
 A D R A G O N F L Y H L S Q Y W B U  
 W L E W N D J O L F P N E E X Y E B  
 P J A T E R M I T E R C C V W B E K  
 G Z M S X A V G Q T A O T L N U T E  
 S L O Z H C F C S I Y C T A N T L R  
 I G S U V G L E O S I K P D R T E P  
 X J Q B E E J I R L N R U Y L E F K  
 Q Y U N R E G F O E G O I B K R I Y  
 B P I C R I C K E T M A V U P F Q X  
 U U T K X F L E A M A C Z G B L N V  
 P N O A T J U G K A N H P E R Y N M  
 H O R S E F L Y Q Q T M D L B P P O  
 T H G L O W A N T P I E Z D Q O H T  
 O N W A A D G N D H S P I B B F O H  
 T G H G R A S S H O P P E R F N T L



ant		cocoon	grasshopper	
bee		cricket	horsefly	moth
beetle		dragonfly	insect	praying mantis
butterfly		firefly	ladybug	six
cockroach		flea	mosquito	termite



Make a collection of leaf rubbings.  
Make leaf rubbings from all of the trees in your neighborhood. Staple the pages together to make your own book of leaves!

Make an X when you find:

Rough bark \_\_\_\_\_

Tree seed or nut \_\_\_\_\_

Animal trail or tracks \_\_\_\_\_

A nest \_\_\_\_\_

Tree Flowers \_\_\_\_\_

6 legged insect \_\_\_\_\_

Bird in a tree \_\_\_\_\_

Smooth tree bark \_\_\_\_\_

Spider web \_\_\_\_\_

Heart-shaped Leaves \_\_\_\_\_

*Can you find these things on trees?*